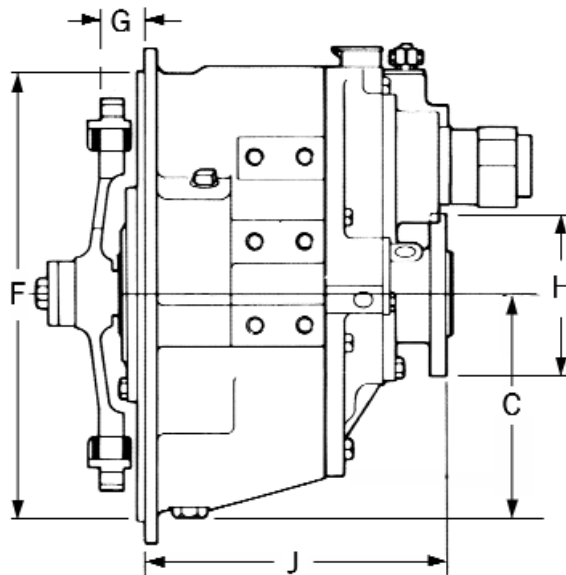
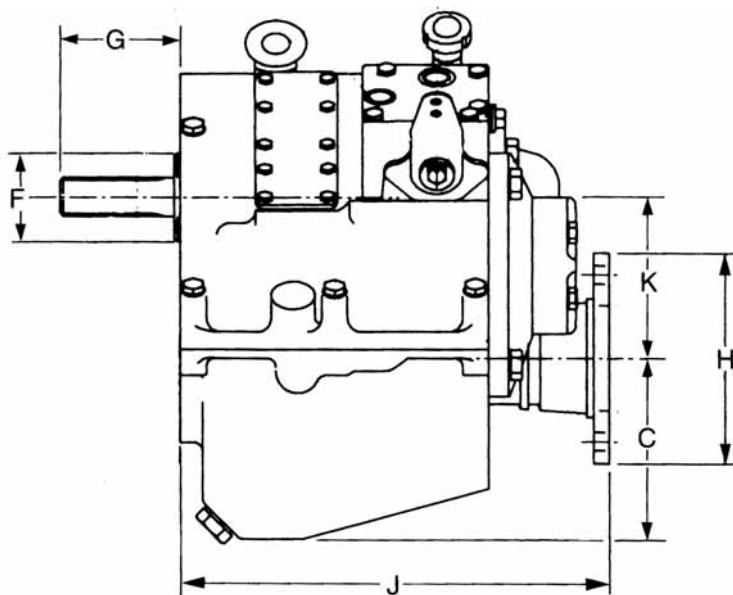


In-line and drop centre hydraulic engagement gearboxes



Make		PRM										
Model		150	260 ^①	500	750 ^②	750	1000	1000	1500SC	1500DC	1750SC	1750DC
REDUCTION					(1.09)				1.22/1.56		1.22/1.56	
RATIOS :1		1.53		1.46	(1.46)		1.53		1.94	3.12	1.94	3.12
		2.09	1.96	1.94	1.94		(2.03)		2.25	3.88	2.25	3.88
				(2.57)	[2.57]				2.45	4.50	2.45	4.50
		2.82	2.94	(2.90)	[2.90]	3.95	(2.86)	4.00	(3.00)	(4.90)	3.0	(4.90)
FWD DIRECTION(S)		BOTH	BOTH	BOTH	BOTH	BOTH	BOTH	BOTH	BOTH	BOTH	BOTH	BOTH
Weight	W Kgs	21	48	68	72	80	86	93	260	300	260	300
Length	J mm	216	293	314	314	314	305	305	513	513	513	513
Drop	K mm	74	89	121	121	153	135	174	188	248	188	248
Depth	C mm	122	117	121	121	140	127	162	200	180	200	180
Spigot	F mm	88	50.8	63.5	63.5	63.5	88.5	88.5	SAE3	SAE1,2	SAE3	SAE1,2
Shaft	G mm	75	95	89	89	89	76	76	60	60	60	60
Flange	H ins	4	5	5 3/4	5 3/4	5 3/4	5 3/4	7 1/4	7 1/4	10 1/2	7 1/4	10 1/2
Max Diesel HP/100*		2.1	3.6	6.4(6.2)	(10.5)9.5[8.0]	8.0	14.4(11.5)	11.5	21(18.9)	21(18.3)	248	248(22)
Max RPM		5000	4500	4500	4500	4500	3500	3500	3000	3000	2500	2500
Cooler size		1	1	2	2	3	2	3	4	4	4	4
Lubricant		SAE30 Engine Oil										

*Pleasure boat rating PTO available on 500 - 1750

^① Also available in 'in-line' form, J = 358 K = 0 W = 63

Get you home device fitted

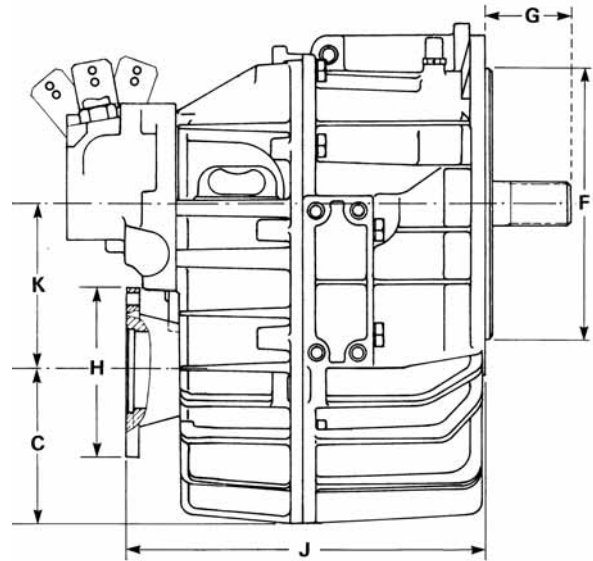
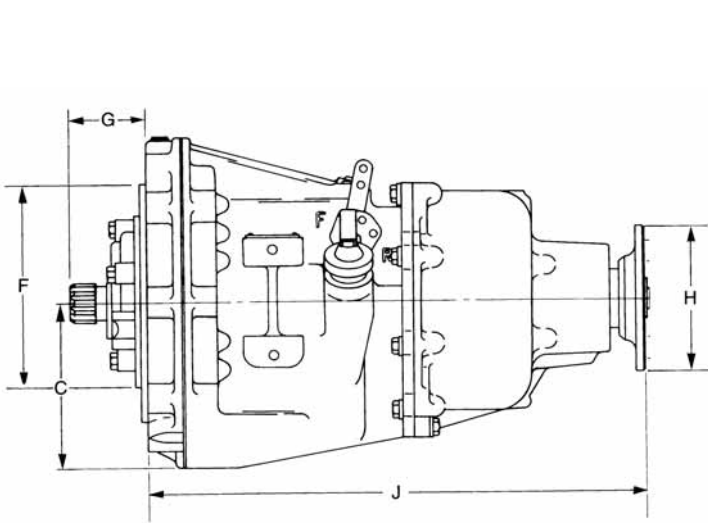
^② Also available in 'in-line' form, J = 400 K = 0 W = 93

Trolling valve and electric shift available on 260 - 1750

All gearboxes except PRM150 may be ordered for non-standard input rotation.

Made in England

All gearboxes may be operated with single lever remote controls, and will accept



	TWIN DISC			VELVET DRIVE			ZF (PREVIOUS HURTH HSW TYPES)					
Model	5050	506	5061	71	72	72 ^④	12(125H)	25(250H)	45(450H)	63(630H)	220	280-/
Ratio	1.23	1.09	1.15	1.00	1.00	1.52				1.25	1.00, 1.13	1.00
Ratio	1.53	1.50	1.48	(1.52)		(1.88) ^③	1.95 ^⑤	1.97	2.20	1.51, 1.75	1.24, 1.40	1.06, 1.14
Ratio	1.71/2.04	1.97	1.77/2.00			(2.10)	2.14		2.51	1.95	1.50, 1.96	1.21, 1.30
Ratio	2.45	(2.50)	2.43			2.57	(2.63)		3.03	(2.48)	2.48	1.51, 2.00
Ratio	3.00	(2.96)	3.00			2.91		(2.80)	3.74	(2.79)	(3.00)	2.48, 3.00
Mounting	EITHER	BOTH	BOTH	AS	AS	AS	BOTH	BOTH	BOTH	BOTH	BOTH	BOTH
Weight (kg)	80	105	98	43(66)	49	69	13	24	60	46	63	73
Weight (kg)	325	255	335	267(429)	291	452	222	270	222	273	385	394
Weight (kg)	134	0	144	0	0	0	72	99	151	126	135	146
Weight (kg)	119	201	123	144	144	144	89	101	139	119	125	131
SAE Input	SAE1,2,3	SAE1,2,3	SAE1,2,3	209	209	209	88	92	111FEM	209	111FEM	111FEM
SAE Input	38	38	38	65	65	65	75	83	74	65	95	71
SAE Input	5 ³ / ₄	5 ³ / ₄	5 ³ / ₄	4(5)	5	5	4	4	5 ³ / ₄	5	5 ³ / ₄ T.D.	5 ³ / ₄ T.D.
SAE Input	11.4	11.3(10.0)	14.3	5.7	8.6	8.6(7.1)	1.8(1.5)	4.4(3.4)	6.3	9.6(7.9)	13.2(11.5)	20.0
SAE Output	3300	3000	3200	-	-	-	3800	5500	5500	5500	4500	3200
SAE Output	2HP	2HP	2HP	2	2	2	1	1	2	1	3HP	4HP
Oil	SAE30 Engine Oil			ATF Dextron			ATF Dextron				SAE30 Engine Oil	

Trolling valve available
PTO available (not 506)
Electric shift available (not 506)

Ratio in 'R' approximately 20% less

^③ Opposite rotation

^④ Also available in V-drive form

^⑤ Opposite rotation

Electric shift available (not 12)

PTO flanges available (not 12)

Trolling valves available (not 12)

Made in Belgium

Made in U.S.A.

Made in Italy and Brazil

propeller shaft thrust. Always fit a flexible coupling