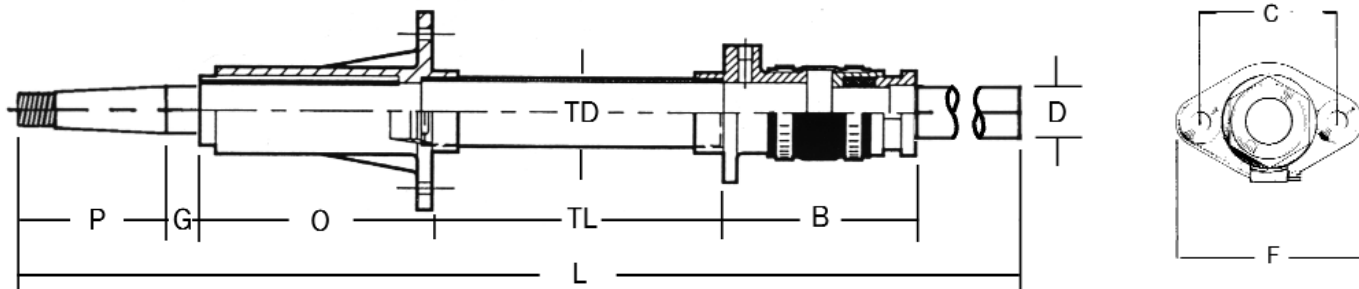
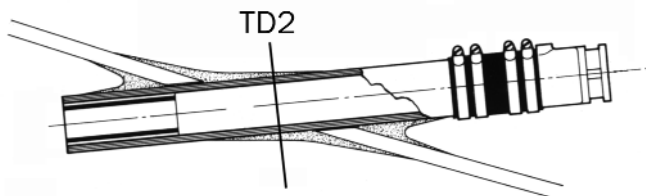


Sterngear dimensions

Bolt-in Sterntube installation



Glass-in and weld-in Sterntube installation



Dimensions

Shaft diameter	D ins	3/4"	1"	1 1/4"	1 1/2"	1 3/4"	2	2 1/4"	2 1/2"
Tube diameter **	TD/TD2	1 1/2"/1 1/2"	1 1/2"/1 3/4"	2"/2"	2 1/4"/2 1/4"	2 1/2"/2 5/8"	2 7/8"/3"	3"	3 1/2"
Shaft length	L	TO ORDER							
Tube length, min/max	TL cm	3/120	3/150	3/180	3/180	3/210	3/210	3/240	3/240
Seal length	B mm	DEPENDS ON TYPE OF SEAL USED (131 FOR DEEP SEA)							
Overhang length	O cm	8	10	13	15	18	20	23	25
Prop seat to Tip length	P mm	79	95	121	140	159	184	203	216
Rope-cutter gap	G mm	38	38	41	41	51	51	57	57
Flange size	F cm	10x5	13x6	14x8	14x9	16x9	17x9	18x10	23x15
Drilling centres*	C mm	79	102	111	114	133	140	149	178x57

* Bolt-in style only

** Other diameters available in G.R.P., aluminium and steel

For "Short Stand-Proud" Cutless Bearing Housings, dimensions "O" and "TL, min" are interchanged

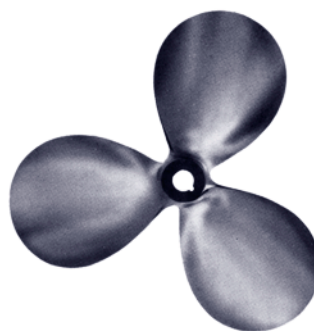
Propellers

Propeller styles

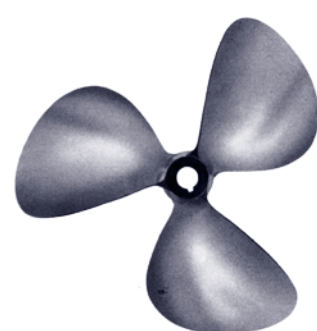
Data required for propeller calculation and manufacture

- Hull shape (sail boat, round bilge, hard chine, etc.)
- Total laden weight (including crew, gear and stores)
- Maximum useable propeller diameter
- Waterline length
- Number of engines
- Maximum horsepower and R.P.M.
- Gearbox reduction ratio
- Shaft diameter
- Shaft taper (1 in 10, 12 or 16)
- Propeller boss length
- Keyway size

Turbine, 50% B. A. R.



Equipoise, 65% B. A. R.



Deep sea seal applications

Size	Shaft diameters	Sterntube O/D	Std. Speed	HS	Insert required
2	25mm - 30mm 1" - 1 1/4"	35mm - 43mm	1800	2950	25mm, 1" - 1 1/8"
3	25mm - 30mm 1" - 1 1/4"	43mm - 51mm	1800	2950	25mm, 1" - 1 1/8"
4	30mm - 35mm 1 1/4" - 1 3/8"	43mm - 51mm	1740	2850	All sizes
5	30mm - 35mm 1 1/4" - 1 3/8"	51mm - 60mm	1740	2850	All sizes
6	35mm - 40mm 1 3/8" - 1 5/8"	51mm - 60mm	1670	2750	35mm, 1 3/8" - 1 1/2"
7	35mm - 40mm 1 3/8" - 1 5/8"	60mm - 70mm	1670	2750	35mm, 1 3/8" - 1 1/2"
10	40mm 1 5/8" - 1 3/4"	70mm - 80mm	1560	2600	All sizes
8	45mm 1 3/4" - 2"	70mm - 80mm	1560	2600	All sizes
9	50mm 2"	70mm - 80mm	1560	2600	None